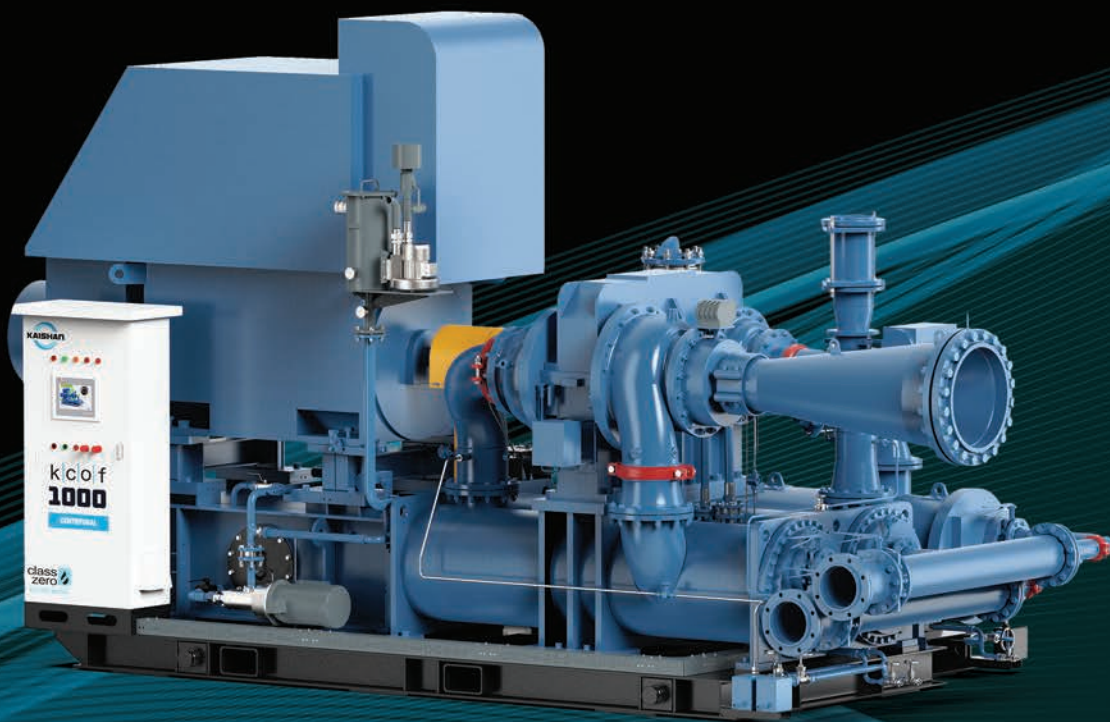


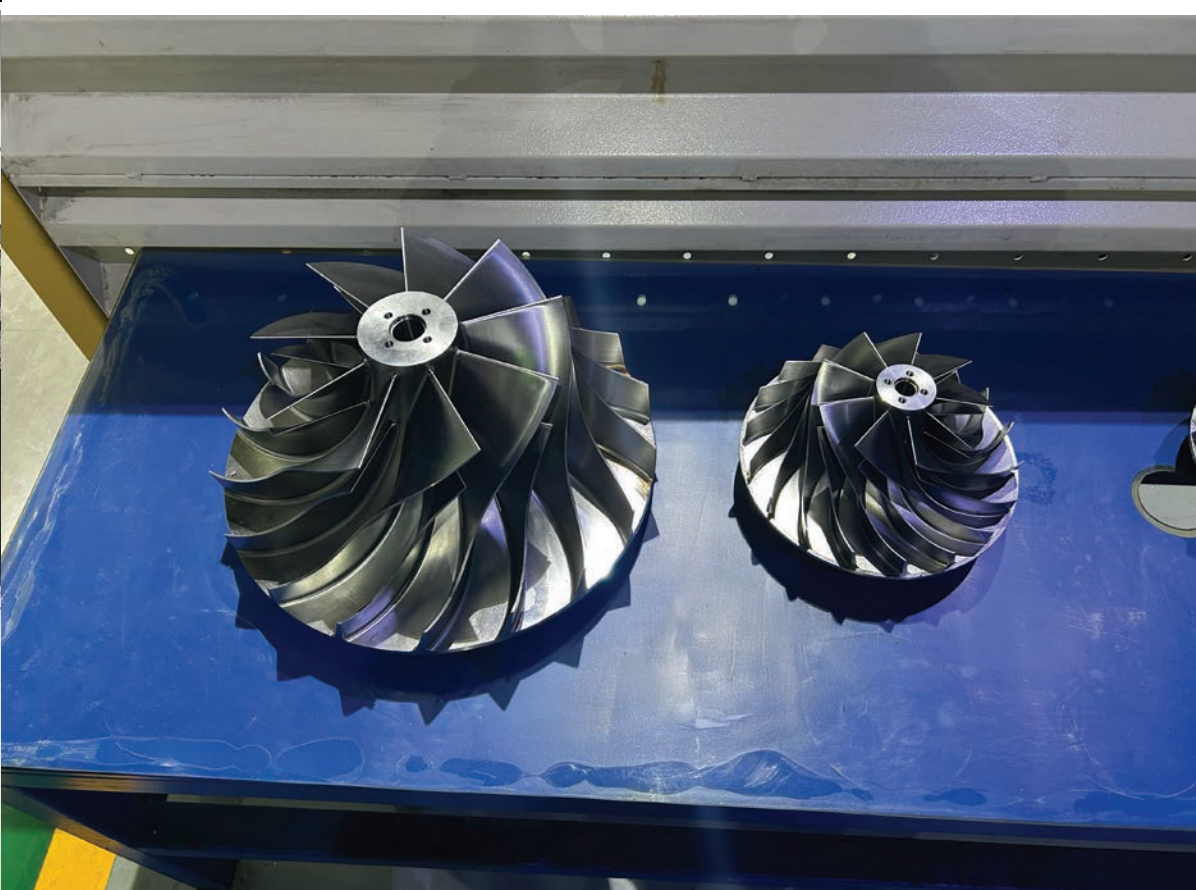
WORLD CLASS · EFFICIENCY · RELIABILITY

k|c|o|f

OIL FREE CENTRIFUGAL



Kaishan Compressor USA



USA
HEADQUARTERS
LOCATED IN
LOXLEY, AL



KAISHAN USA'S HEADQUARTER FEATURES

- Oil Free Rotary Screw Design Center for the entire Kaishan Group
- 60Hz Center of Excellence
- 100+ Years of Engineering Design Experience
- State of the Art Machining Centers
- Quality Focused
- Cutting-Edge, Lean Manufacturing Techniques



MOTOR

- Multiple Motor Enclosure options including IEC TEFC IE3 Premium Efficiency – IP55 protects against dust, chemicals and humidity
- Flexible Direct coupled

THRUST COLLAR DESIGN

- Thrust loads generated by the impeller shaft running at high speed is transmitted with Thrust Collars to the bullgear running at low speed.

INLET GUIDE VANES

- Quick response to system changes
- Up to 9% energy savings during turndown
- Constant Pressure Control
- Reliable, robust design



INLET FILTER / OPTIONS

- High flow / low pressure drop
- Clean fresh air to the inlet
- Noise reduction
- 2-stage Panel Type Filters or option for Kaishan's "Self-Cleaning" Inlet Air Filter

CONTROLS

- Critical operating parameters monitored and controlled for safe operation
- Peer-to-Peer Networking and Load Sharing on multiple machine installations
- Multi-lingual capabilities
- USA designed and supported
- Alarms and maintenance reminders

SERVICABILITY

- Minimal service parts
- Minimal service time
- All PMs parts easily accessible
- Dual Oil Filter for easy change without shutting down machine



INTERCOOLERS / AFTERCOOLER

- 12mm (1/2") Water-in-Tube design
- Straight tubes with no internal obstructions
- Standardized 316L S/S tubes and bundles with other metallurgy options
- Epoxy coating corrosion protection on shells.



PACKAGED LAYOUT

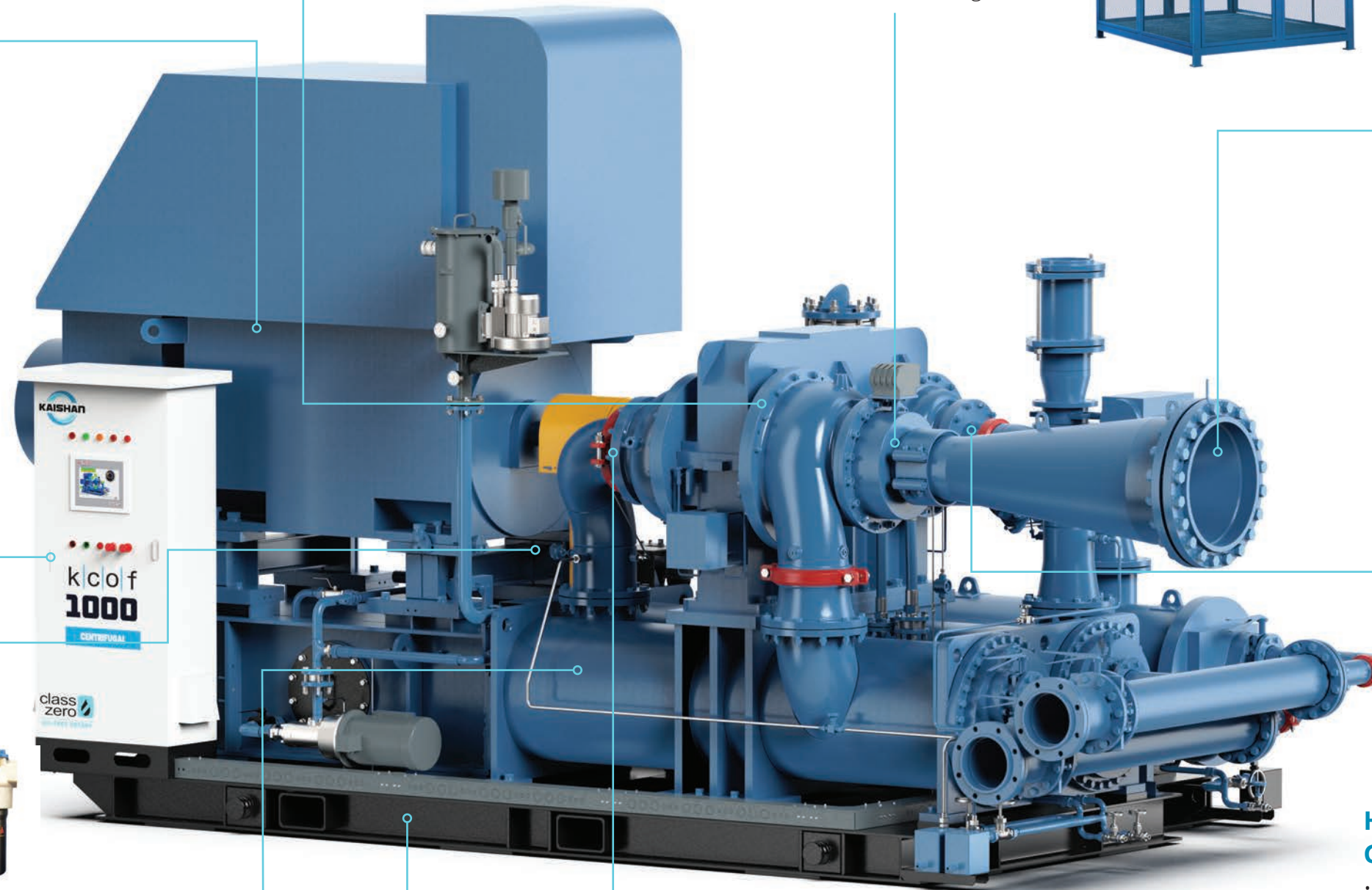
- Packaged concept for ease of shipment and less installation work in the field.
- Packaged designed for sound attenuation options

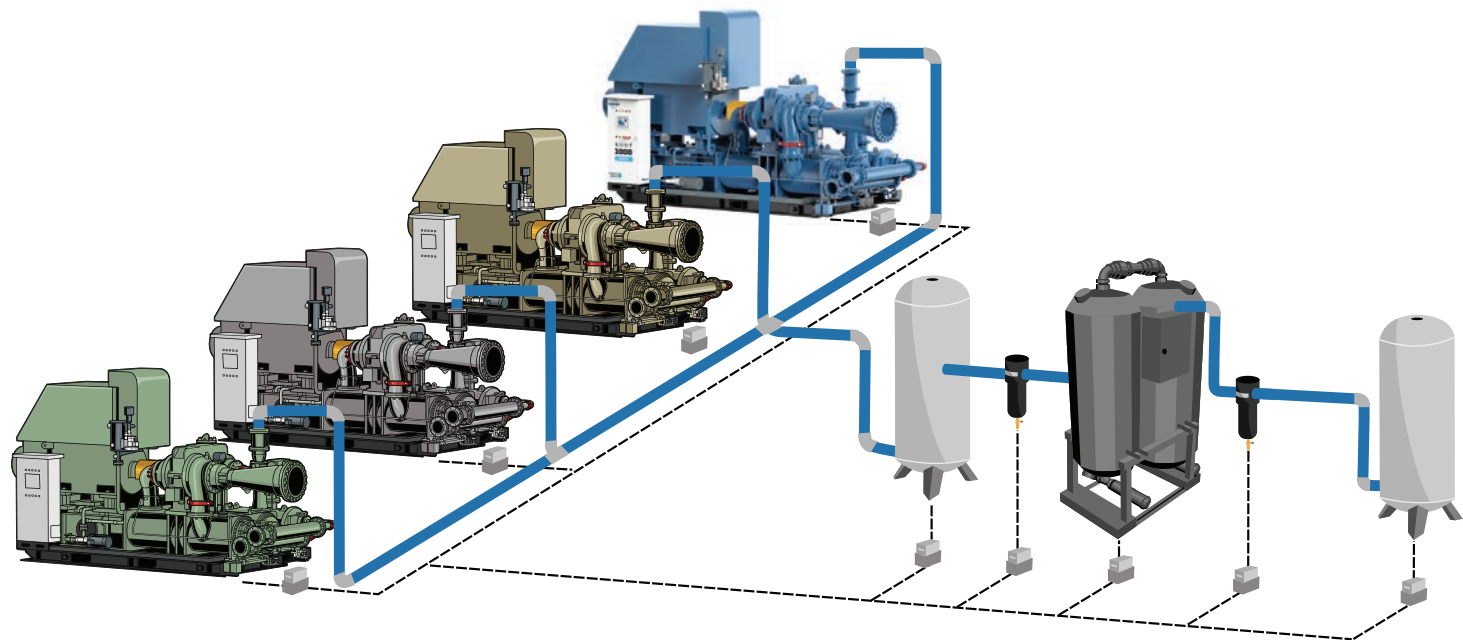
DURABLE, LONG LIFE BEARINGS

- Tilting Pad Journal Bearings ensure stable rotor operation under various operating conditions
- Horizontally split design

HORIZONTALLY SPLIT GEARBOX DESIGN

- AGMA 13 Grade, Unidirectional Helical Gears
- Easy access for inspection of gears, bearings and seals
- Seal design ensures zero oil in compressed air





TECHNICAL DATA: 3-STAGE UNITS (2-STAGE AND 4-STAGE AS OPTIONS)

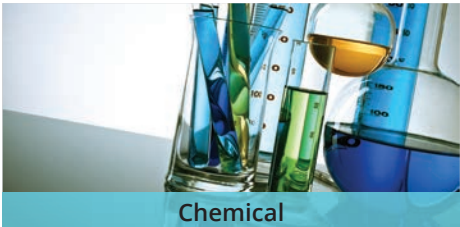
MODEL OR FRAME	POWER		PRESSURE		FLOW		WEIGHT		DIMENSIONS (LxWxH)	
	kW	HP	BarG	PSIG	M3/min	CFM	lbs	kgs	in	mm
KCOF 600	200 to 450	250 to 600	5 to 11	72.5 to 160	40-70	1,400-2,500	19,000	8,600	174x85x100	4,420x2,159x2,540
KCOF 800	400 to 650	500 to 900	5 to 11	72.5 to 160	70-100	2,500-3,500	21,500	9,700	197x71x121	5,003x1,803x3,073
KCOF 1000	560 to 800	800 to 1,100	5 to 11	72.5 to 160	100-140	3,500-4,900	31,000	14,179	210x75x123	5,334x1,905x3,124
KCOF 1500	710 to 1,120	900 to 1,500	5 to 11	72.5 to 160	140-195	4,900-6,900	32,000	14,415	224x79x146	5,689x2,006x3,708
KCOF 2000	900 to 1,600	1,250 to 2,250	5 to 11	72.5 to 160	195-290	6,900-10,250	40,000	18,465	251x79x146	6,375x2,006x3,708
KCOF 3000	from 1,600	from 2,250	5 to 11	72.5 to 160	290-380	10,250-13,450	per project			
KCOF 4000	from 2,200	from 3,000	5 to 11	72.5 to 160	380-565	13,450-20,000	per project			
KCOF 6000	from 3,280	from 4,400	5 to 11	72.5 to 160	565-800	20,000-28,000	per project			
KCOF 8000	from 4,600	from 6,200	5 to 11	72.5 to 160	800-1,500	28,000-53,000	per project			



Food and Beverage



Pharmaceutical



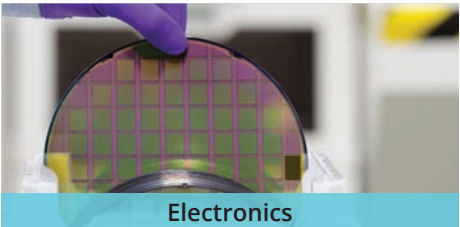
Chemical



Textile



Utilities



Electronics

KAISHAN
KCOF OFFERS
UNMATCHED
CONTROLS
INTEGRATION
FLEXIBILITY

Controls Flexibility

Whether an existing installation with a current controls platform or simply by request of the customer for a specific controls integration platform, Kaishan KCOF offers unmatched controls integration flexibility. Kaishan KCOF has partnered with a variety of USA field-proven, designed, and supported controls platforms to match the customer’s needs and requests. Kaishan performs this integration without the customary engineering charges or penalties common in the market.



AIR QUALITY
STANDARDS
ISO 8573.1

CLASS	Concentration total oil (aerosol, liquid, vapor) mg/m³
0	As specified by the equipment user or supplier and more stringent than class 1
1	< 0.01
2	< 0.1
3	< 1
4	< 5

KAISHAN KCOF STANDARD CONTROL PACKAGE

TurboLogix® BASIC

- Allen-Bradley CompactLogix hardware standard
- Open software architecture
- Modbus & Allen-Bradley communication included
- 10.5" color touch-screen operator interface standard
- Optional 15" operator interfaces available
- Extensive data trending/event logs plus backup
- Maintenance timers
- Enhanced Cascade PID Inlet Control
- Energy saving compensated turn-down
- Fully field-configurable
- Simplified installation and startup
- DCS-friendly
- Enhanced reliability
- TotalCare Connect Cloud Compatible



TurboLogix® ENGINEERED

- Includes all of the features of TurboLogix® BASIC
- Customized design panel to fit your needs and all environments
- Allen-Bradley ControlLogix upgrade hardware available
- Replace or integrate with current or obsolete system

LOADSHARING POWER SAVINGS

- Energy saving “throttle alignment” to provide utmost “inlet guide” savings from all units
- “Wakeless” system testing to provide non-disruptive removal of compressors from a system
- “Peer-to-Peer” design – no external black box or special hardware required
- Ethernet-based communication network
- Automated management system (start/stop, load/unload) of compressors
- Compatible with electric and turbine driven centrifugal compressors
- Fastest installation and setup anywhere in the world

ENHANCED PERFORMANCE MONITORING PACKAGE

- Hardware/software enhancement to pinpoint issues that cause frequent downtime
- Features include performance measurements for electricity usage/costs, inlet and bypass valves performance, compressor performance loss due to dirty inlet filters, oil pressure loss due to dirty oil filters and maintenance alerts
- Highly desirable upgrade for preventative maintenance, enhanced troubleshooting, field performance analysis and cloud-based analytics
- Helps minimizes field service calls and prevents downtime – saving customers money



info@KaishanUSA.com
15445 Industrial Park Dr. · Loxley, AL 36511 USA
+1 251.257.0773
KaishanUSA.com