

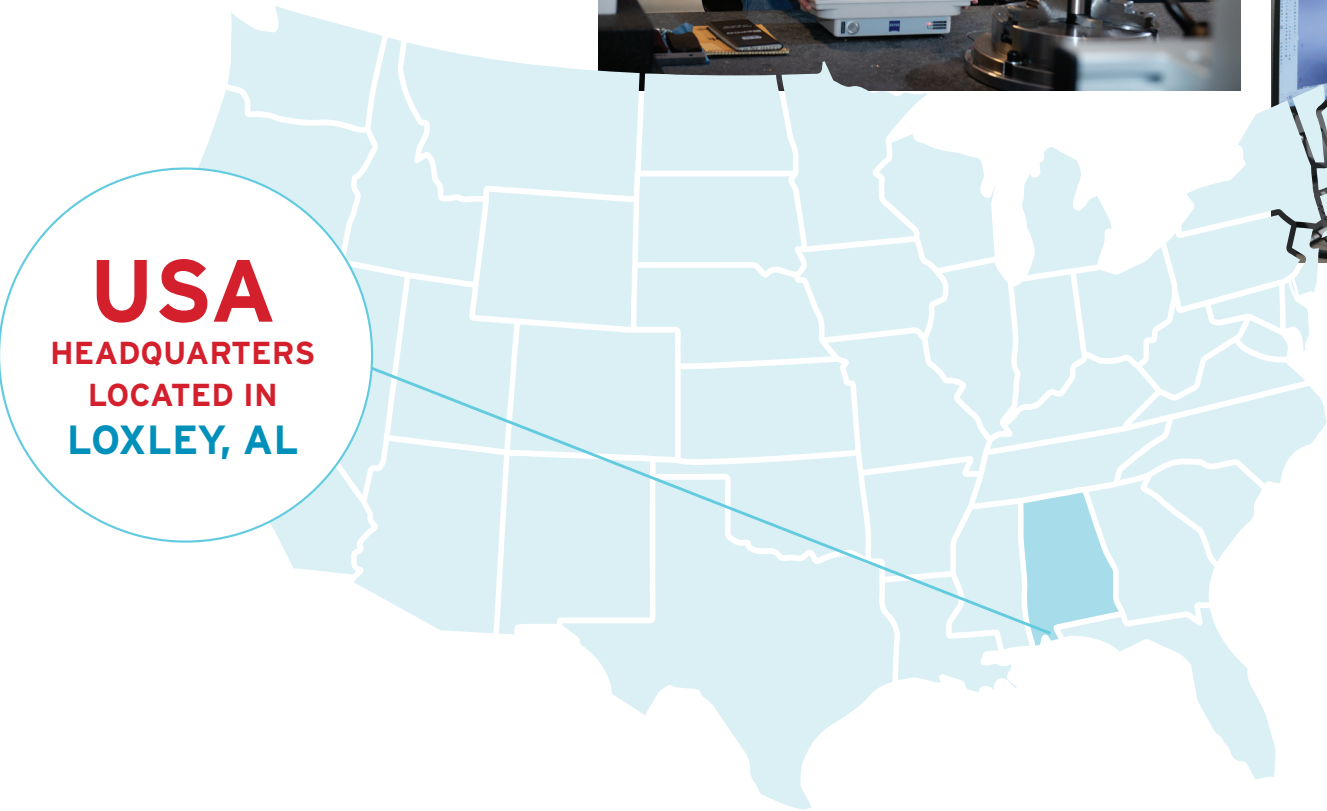
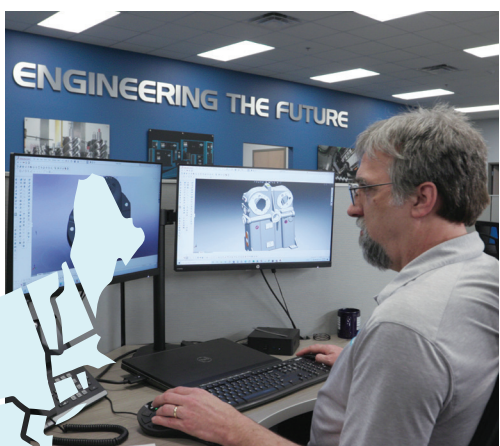
WORLD CLASS · EFFICIENCY · RELIABILITY

# kr|o|f

TWO STAGE OIL FREE ROTARY

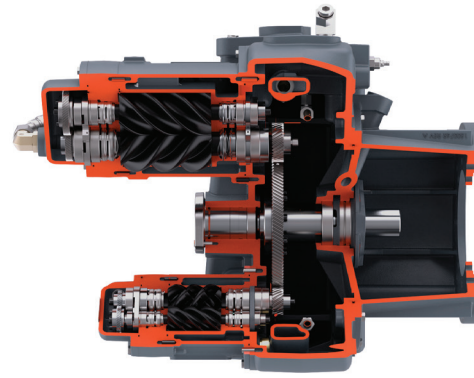


Kaishan Compressor USA



### KAISHAN USA'S HEADQUARTER FEATURES

- Oil Free Design Center for the entire Kaishan Group
- 60Hz Center of Excellence
- 100+ Years of Engineering Design Experience
- State of the Art Machining Centers
- Quality Focused
- Cutting-Edge, Lean Manufacturing Techniques



### PRECOOLER / INTERCOOLER

- Precooler reduces thermal stress load
- Highly efficient robust 2 stage cooling
- Approach temperatures designed to be under 15 degrees Fahrenheit



### HYDRAULICLY CONTROLLED INLET VALVE

- Quicker response to system changes
- Lower starting inrush current
- Control independent of operating pressure
- Reliable, robust design



### UNIQUE PACKAGE LAYOUT

- Package is split into cold / hot side
- Cooling air efficiently distributed through packaged
- Each aspect of package designed for sound attenuation



### INLET FILTER / DUCTING

- High flow / low pressure drop
- Clean fresh air
- Noise reduction
- Minimize restriction



### COOLING FANS

- Aerospace grade Polycarbonate
- Dynamically balanced
- Extremely Efficient
- Modular designed integrated motor
- High static pressure capability

### CONTROLS

- Critical operating parameters monitored and controlled for safe operation
- Networking capable of 16 machines
- Multi-lingual capabilities
- Rugged and robust – UV protected
- Alarms and maintenance reminders

### SERVICABILITY

- Minimal service parts
- Minimal service time
- All PMs parts on same corner
- Spin on oil filter

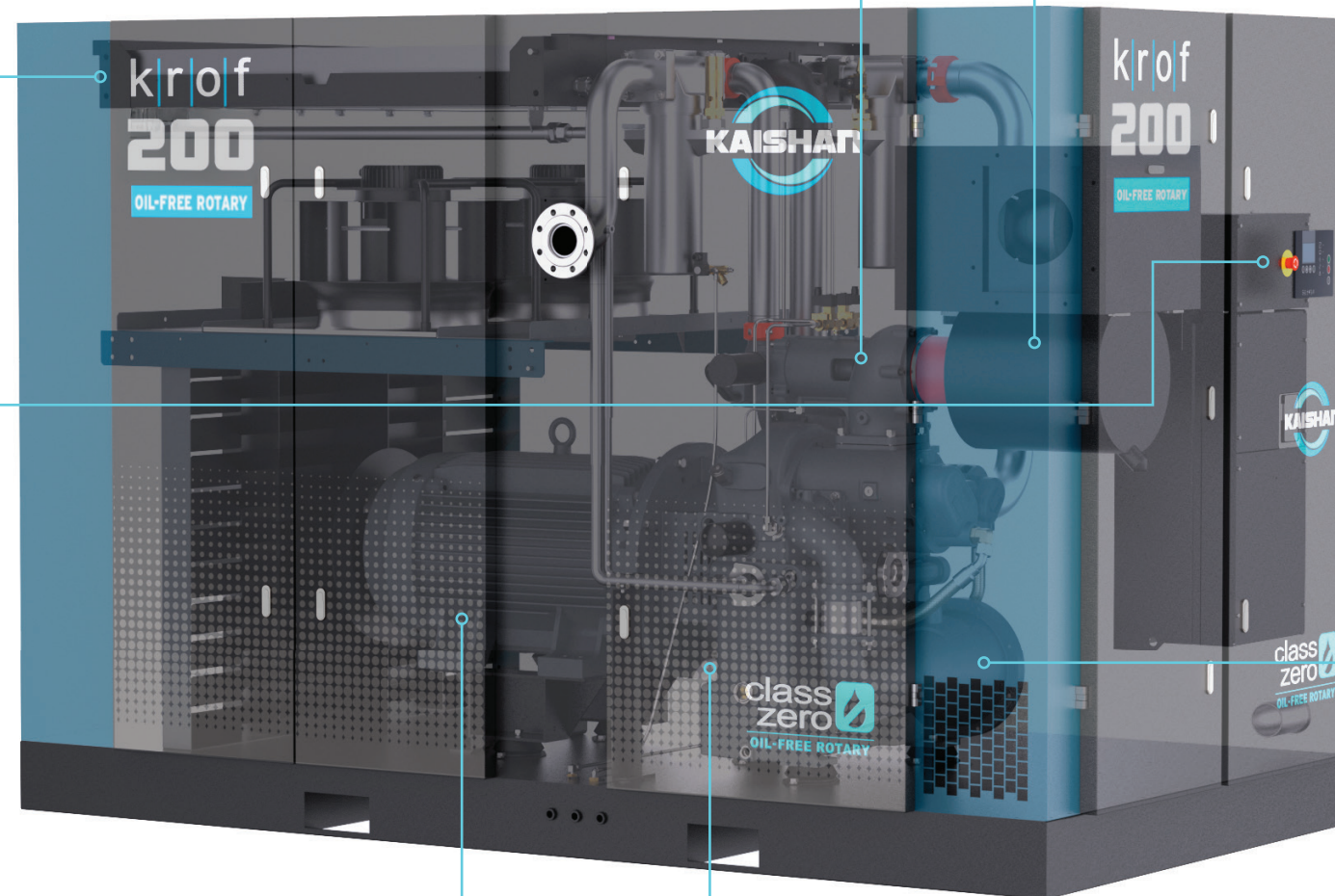
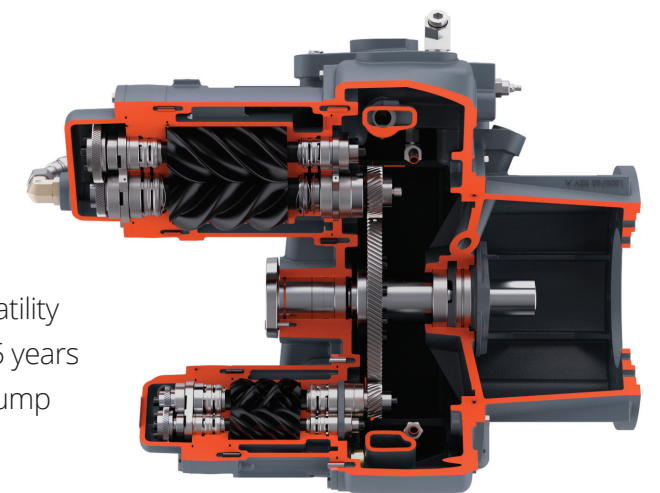
### MOTOR

- NEMA Premium Efficient Motors
- Flexible Direct coupled
- Integral motor adapter for guaranteed alignment

### OIL FREE AIREND

- Integrated oil distribution lines
- Proprietary rotor profile
- PTFE coating on compression chambers and rotors
- Seal design ensures zero oil in compressed air

- Pressure versatility
- Warranty for 5 years
- Auxiliary Oil Pump



## WHAT IS RIDING ON YOUR AIR QUALITY?

The presence of oil in a compressed air system can lead to product defects, spoilage, and even recalls. With a Kaishan Oil Free rotary you have the peace of mind that only the highest purity of compressed air is reaching your products.



Food and Beverage



Pharmaceutical



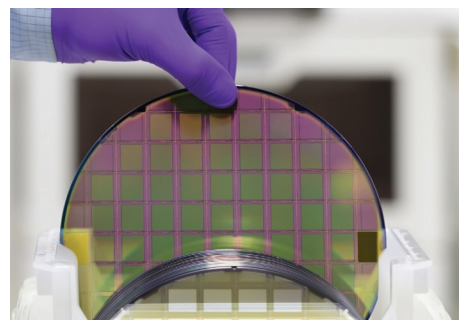
Chemical



Textile



Utilities



Electronics

**class  
zero**   
OIL-FREE ROTARY

### AIR QUALITY STANDARDS ISO 8573.1

CLASS	Concentration total oil (aerosol, liquid, vapor) mg/m <sup>3</sup>
0	As specified by the equipment user or supplier and more stringent than class 1
1	< 0.01
2	< 0.1
3	< 1
4	< 5

## TOTAL INTEGRATED SYSTEM CONTROL

**KROF controller capabilities include the following:**

- Operating parameters
- Maintenance schedules
- Warning stop alarms
- Compressor history

The control panel contains a special programmed microprocessor that can safely and efficiently control all functions of the compressor.

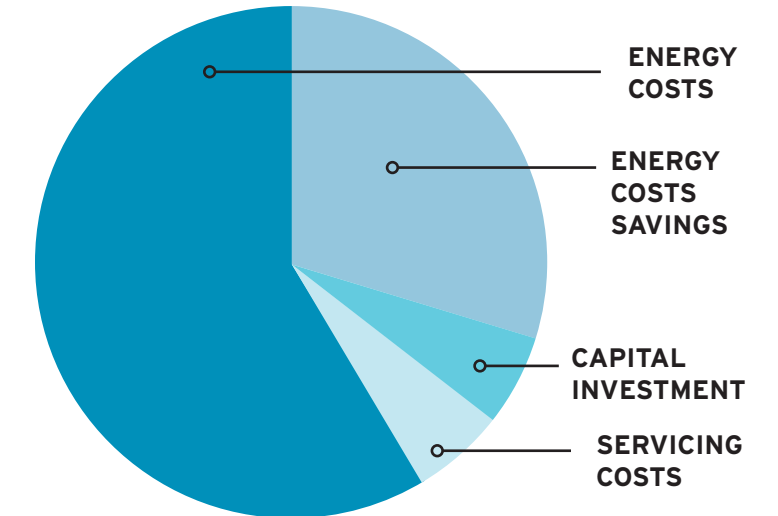
The controller monitors line pressure, oil temperature and working conditions (running, idling and stop). Abnormal conditions will trigger a flashing LED and a message indicating the cause for the alarm.



## READY TO TAKE THE EFFICIENCY TO THE NEXT LEVEL?

**KROF combines a robust power platform with a state-of-the-art control scheme**

The drive provides a soft start and the ability to operate efficiently through the compressor's capacity range by matching flow to demand, while maintaining a high level of pressure control. By eliminating wasted energy, cost savings as high as 35% or more are possible. With this level of savings, the additional capital cost of the variable speed drive can be recovered in less than one year's operation.



*KROF Rotary Screw Compressor operating at 70% load compared to a fixed speed model.*

### 60 HZ DATA - TECHNICAL DATA KROF SERIES FIXED SPEED

MODEL	POWER HP	FLOW (CFM / M3/min)						SOUND dBA	WEIGHT		DIMENSIONS (LxWxH)		Connection Size
		100 psi	7 bar	125 psi	8.6 bar	150 psi	10 bar		lbs	ks	in	mm	
KROF-125	125	515	14.6	515	14.6	403	11.4	84	9520	4318	136x76x89	3452x1930x2260	ANSI 3"
KROF-150	150	623	17.6	623	17.6	538	15.2	84	9940	4509	136x76x89	3452x1930x2260	ANSI 3"
KROF-200	200	821	23.2	821	23.2	742	21.0	84	10220	4636	136x76x89	3452x1930x2260	ANSI 3"

### 60 HZ DATA - TECHNICAL DATA KROF SERIES VARIABLE SPEED

MODEL	POWER HP	FLOW (CFM / M3/min)						SOUND dBA	WEIGHT		DIMENSIONS (LxWxH)		Connection Size
		100 psi	7 bar	125 psi	8.6 bar	150 psi	10 bar		lbs	ks	in	mm	
KROF-150	150	677	19.2	616	17.4	555	15.7	84	9940	4509	136x76x89	3452x1930x2260	ANSI 3"
KROF-200	200	890	25.2	826	23.4	758	21.5	84	10220	4636	136x76x89	3452x1930x2260	ANSI 3"



[info@KaishanUSA.com](mailto:info@KaishanUSA.com)

15445 Industrial Park Dr. · Loxley, AL 36511 USA

251.257.0185

[KaishanUSA.com](http://KaishanUSA.com)